

2 Bedroom Detached Bungalow for Sale - £350,000

Heysham Road, Heysham, LA3 2BP



KEY FEATURES

- Two Bedroom Detached Bungalow
- Popular Residential Location
- Two Reception Rooms
- Sun Room With Distant Views Of The Sea
- Kitchen And Separate Utility
- Large Loft Space
- Large Garden To The Front And Rear
- Viewings Are Highly Recommended
- No Upper Chain

Description

A deceptively large plot with two double bedrooms and huge potential to extended into the loft space (subject to planning), to create another two bedrooms. This detached dormer bungalow is located on Heysham Road and has fantastic access to local shops, bus route and is only a short walk to the sea front. The property features an entrance hallway which is open plan to the dining room. Double doors leading to the main reception room with decorative wooden panel walls and feature open fire. Sun room to the front of the property with views overlooking the front garden and distant views towards the sea. The kitchen is located to the rear of the property and features a breakfast bar, fitted appliances and separate utility. Two double bedrooms and family three piece bathroom suite. The first floor leads to the loft, which is currently been used as a bedroom, with access to further loft space. Currently being used for storage, but could easily be converted into another bedroom (subject to planning).

Externally the property provides a large laid lawn garden to the front and a long driveway leading to the garage. Enclosed private garden with a large decking area and laid lawn.

Viewings are highly recommended, so contact the office to book your viewing appointment. No Upper Chain.

Ground Floor

Entrance Hall - UPVC entrance door, double radiator and coving to the ceiling. Open plan to -

Dining Room - 9' 11" x 13' 8" (3.03m x 4.18m) UPVC double glazed window to the side aspect. Double radiator. Stairs leading to the first floor. Coving to the ceiling. Double doors leading to-

Lounge - 15' 10" x 9' 11" (4.84m x 3.03m) UPVC double glazed window to the front aspect. Feature wooden wall panels and open fire with wooden surround, fitted mirror and tiled hearth. Double radiator. Double doors leading to-

Sun Room - 15' 11" x 13' 2" (4.86m x 4.03m) (max) UPVC double glazed windows to the front with views overlooking the front garden and distant views towards the sea front. Wooden parquet flooring, two double radiators and uPVC door leading to the front garden.

Kitchen - 9' 4" x 13' 3" (2.86m x 4.04m) (max) Fitted kitchen with a range of wall and base units with contrasting work surface incorporating a breakfast bar, round inset stainless steel sink unit and drainer. Double



electric oven, five ring gas hob and extractor fan. Space for a fridge and dishwasher. Under stairs storage cupboard. UPVC double glazed window to the rear aspect and uPVC double doors leading to the rear garden.

Master Bedroom - 11' 2" x 15' 10" (3.41m x 4.84m)

Decorative plaster architectural walls and ceiling. Double radiator. UPVC double glazed window to the front aspect and double doors leading to the sun room.

Bedroom Two - 10' 11" x 12' 4" (3.33m x 3.76m) UPVC double glazed window to the rear aspect. Double radiator. Decorative plaster architectural design to the walls.

Bathroom - Three piece suite comprising; bath with overhead shower, wash hand basin and low level WC. UPVC double glazed window to the rear aspect. Tiled walls, radiator and down lights.

First Floor

Bedroom Three - 12' 6" x 9' 6" (3.83m x 2.9m) UPVC double glazed window to the rear aspect and Velux window. Double radiator. Door leading to-

Loft Space - 9' 7" x 9' 6" (2.94m x 2.91m) Plastered walls and ceiling. Door leading to a second loft space.

Exterior

Utility Room/WC - 6' 2" x 6' 5" (1.88m x 1.97m) (max)

Two piece suite comprising; wash hand basin and low level WC. UPVC double glazed window to the rear aspect. Space for a washing machine and dryer. Door leading to-

Garage - 19' 9" x 9' 0" (6.03m x 2.76m) (max)

Up and over door, power and light.

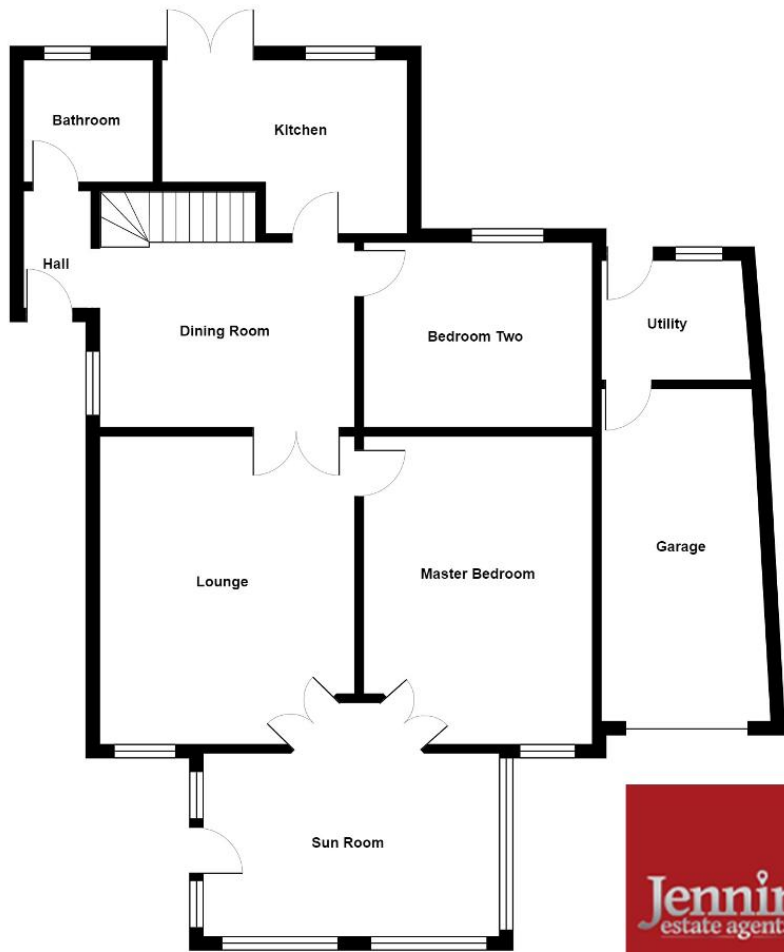
Gardens - Large laid lawn to the front of the property with trees and shrubs. Long tarmac driveway leading to the block paved frontage, providing ample off road parking.

Enclosed rear garden with a large decking area, paved patio area to the side, laid lawn and tall trees providing privacy.

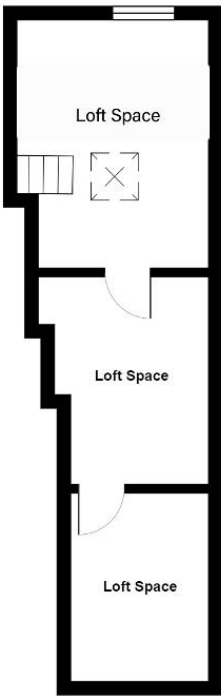




Heysham Road, Heysham



Ground Floor



First Floor



Energy Efficiency Rating			
Score	Energy rating	Current	Potential
92+	A		
81-91	B		81 B
69-80	C		
55-68	D	67 D	
39-54	E		
21-38	F		
1-20	G		

Additional Information: We strive to make our sales brochures to be precise and accurate as possible, however they do not represent or form part of contract or offer. The brochure is not to be relied upon as statements of representation or fact. Jennings Estate Agents Ltd has not tested any services, apparatus, equipment, fixtures, and fittings. All room dimensions and floor plans are measured approximately and should not be taken literally. Items shown in the photographs are not included unless specifically mentioned within the sales particulars.

Fixtures and fittings may be available by separate negotiation. Buyers must check the availability of any property and make an appointment to view before embarking on any journey to see a property.