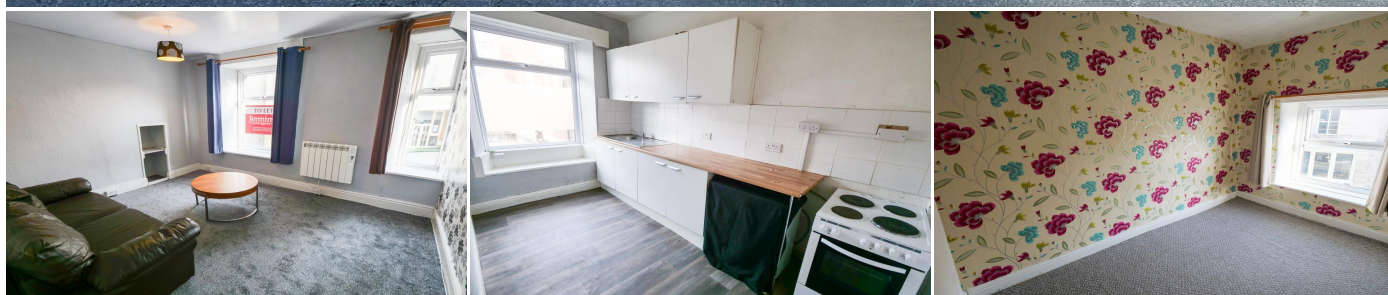


2 Bedroom Flat for Rent - £750 per month

Damside Street, Lancaster, LA1 1PB



KEY FEATURES

- Two Bedroom Apartment
- In The Heart Of Lancaster
- Maisonette
- Three Piece White Bathroom Suite
- Long Term Let Available
- Viewings Are Highly Recommended

Description

We are delighted to offer this two bedroom maisonette, located within the heart of Lancaster. Fantastic access to Lancaster bus station, local shops and only a short walk to the train station.

The property features; entrance hall, kitchen and lounge. Stairs leading to the second floor landing, featuring two bedrooms and a three piece white bathroom suite. Viewings are strongly recommended, so contact the office to book your viewing appointment.

First Floor

Entrance Hall - Stairs leading to the second floor landing.

Lounge - 10' 5" x 11' 11" (3.18m x 3.64m) Two uPVC double glazed windows to the front aspect. Wall mounted electric heater.

Kitchen - 6' 5" x 11' 5" (1.97m x 3.5m) Fitted kitchen with a range of wall and base units, with contrasting work surface, incorporating a stainless steel sink unit. Freestanding cooker and space for a washing machine and fridge freezer.

Second Floor

Second Floor Landing - Double glazed uPVC window to the rear aspect. Storage cupboard.

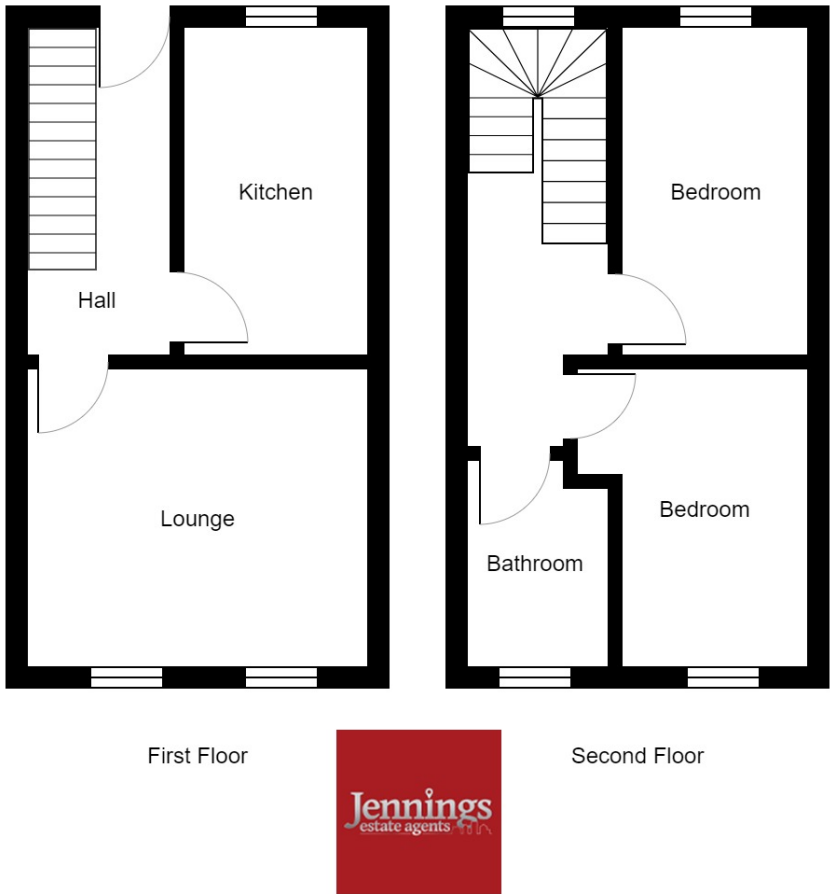
Bedroom One - 6' 7" x 11' 8" (2.02m x 3.58m) Double glazed uPVC window to the rear aspect. Wall mounted electric heater.

Bedroom Two - 6' 1" x 10' 7" (1.87m x 3.24m) Double glazed uPVC window to the front aspect. Wall mounted electric heater.

Bathroom - Three piece suite comprising; bath with overhead shower, wash hand basin and low level WC. Double glazed uPVC window to the front aspect.



Damside Street, Lancaster, LA1 1PB



Energy Efficiency Rating			
Score	Energy rating	Current	Potential
92+	A		
81-91	B		
69-80	C		78 C
55-68	D		
39-54	E	45 E	
21-38	F		
1-20	G		

Additional Information: We strive to make our sales brochures to be precise and accurate as possible, however they do not represent or form part of contract or offer. The brochure is not to be relied upon as statements of representation or fact. Jennings Estate Agents Ltd has not tested any services, apparatus, equipment, fixtures, and fittings. All room dimensions and floor plans are measured approximately and should not be taken literally. Items shown in the photographs are not included unless specifically mentioned within the sales particulars.

Fixtures and fittings may be available by separate negotiation. Buyers must check the availability of any property and make an appointment to view before embarking on any journey to see a property.